

Maureen Cracknell →→→  
**Dutch Treat**

[www.maureencracknellhandmade.blogspot.com](http://www.maureencracknellhandmade.blogspot.com)



# Maureen Cracknell →→→

# Dutch Treat

www.maureencracknellhandmade.blogspot.com

2

## Dutch Treat

Finished Size: 12" square

Designer: Maureen Cracknell

Material: Art Gallery Fabrics

### Materials

- 1 fat quarter NTF-67907 Luminaries Silver (light background)
- 1 fat eighth each PE-453 Purple Pansy (purple solid) and OE-903 Amethyst (lavender ovals)
- 5" square GBL-1438 Cuboid Orchid (purple geometric)

Read through all instructions before beginning. Remove selvages. Sew pieces right sides together and use a  $\frac{1}{4}$ " seam allowance throughout.

### Cut the Pieces

#### From the light background:

Cut (2)  $2\frac{1}{2}$ " x 21" strips then cut into (4)  $2\frac{1}{2}$ " x  $5\frac{1}{2}$ " strips and (8)  $2\frac{1}{2}$ " squares. Cut (2)  $1\frac{1}{2}$ " x 21" strips then cut into (4)  $1\frac{1}{2}$ " x  $2\frac{1}{2}$ " rectangles and (12)  $1\frac{1}{2}$ " squares.

#### From the purple solid:

Cut (3)  $2\frac{1}{2}$ " x 21" strip then cut into (4)  $2\frac{1}{2}$ " x  $5\frac{1}{2}$ " strips and (4)  $2\frac{1}{2}$ " x  $3\frac{1}{2}$ " rectangles

#### From the lavender ovals:

Cut (2)  $1\frac{1}{2}$ " x 21" strips then cut into (4)  $1\frac{1}{2}$ " x  $3\frac{1}{2}$ " strips and (4)  $1\frac{1}{2}$ " x  $2\frac{1}{2}$ " rectangles

#### From the purple geometric:

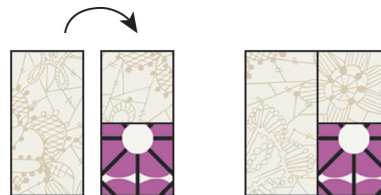
Cut (1)  $2\frac{1}{2}$ " square and (4)  $1\frac{1}{2}$ " squares

### Make the Block

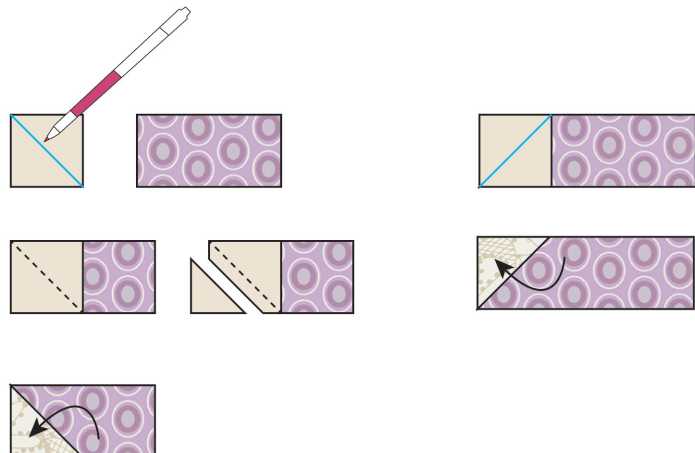
1. Sew (1)  $1\frac{1}{2}$ " light background square right sides together with (1)  $1\frac{1}{2}$ " purple geometric square. Press seams toward the dark print.



2. Referring to the piecing illustrations, sew (1)  $1\frac{1}{2}$ " x  $2\frac{1}{2}$ " light background rectangle to the left side of the section as shown. Press seams toward the rectangle. Set aside.



3. Draw a diagonal line on the wrong side of a  $1\frac{1}{2}$ " light background square. Noting orientation, place the marked square right sides together on a corner of a  $1\frac{1}{2}$ " x  $2\frac{1}{2}$ " lavender oval rectangle. Sew on the drawn line. Tip: Sewing just outside the line on the corner side will keep the unit square. Trim  $\frac{1}{4}$ " past the line. Press corner open. In the same manner, and noting orientation of drawn line, make another lavender oval unit using a  $1\frac{1}{2}$ " light background square and a  $1\frac{1}{2}$ " x  $3\frac{1}{2}$ " lavender oval strip.



# Maureen Cracknell →→→

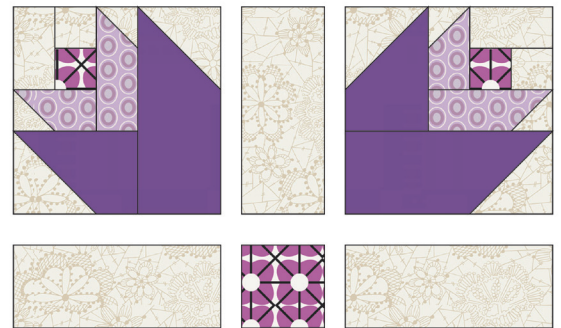
## Dutch Treat

[www.maureencracknellhandmade.blogspot.com](http://www.maureencracknellhandmade.blogspot.com)

3

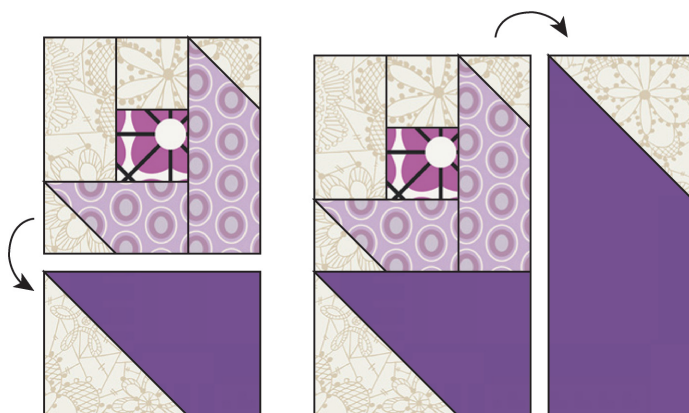
4. In the same manner as in Step 3, sew a 2-½" light background square to a 2-½" x 3-½" purple solid rectangle and a 2-½" light background square to a 2-½" x 5-½" purple solid strip.

5. Sew the 2-½" long lavender oval section to the bottom of the pieced section from Steps 1 and 2. Press seams toward the rectangle. Sew the 3-½" long lavender oval section to the right side of the section. Press seams toward the rectangle.



Block Assembly Diagram

6. In the same manner as Step 5, join the purple solid sections to the pieced sections to make a tulip unit. Make a total of 4 tulip units.



7. Referring to the Block Assembly Diagram and noting orientation, sew a 2-½" x 5-½" light background strip between two tulip units to make an A row. Make a total of 2 A rows.

8. Sew the 2-½" purple geometric square between (2) 2-½" x 5-½" light background strips to make a B row. Join the rows.

Illustrations, instructions, and PDF layout designed by Sharon Holland. All rights reserved. © 2017 Sharon Holland [www.sharohollanddesigns.com](http://www.sharohollanddesigns.com)